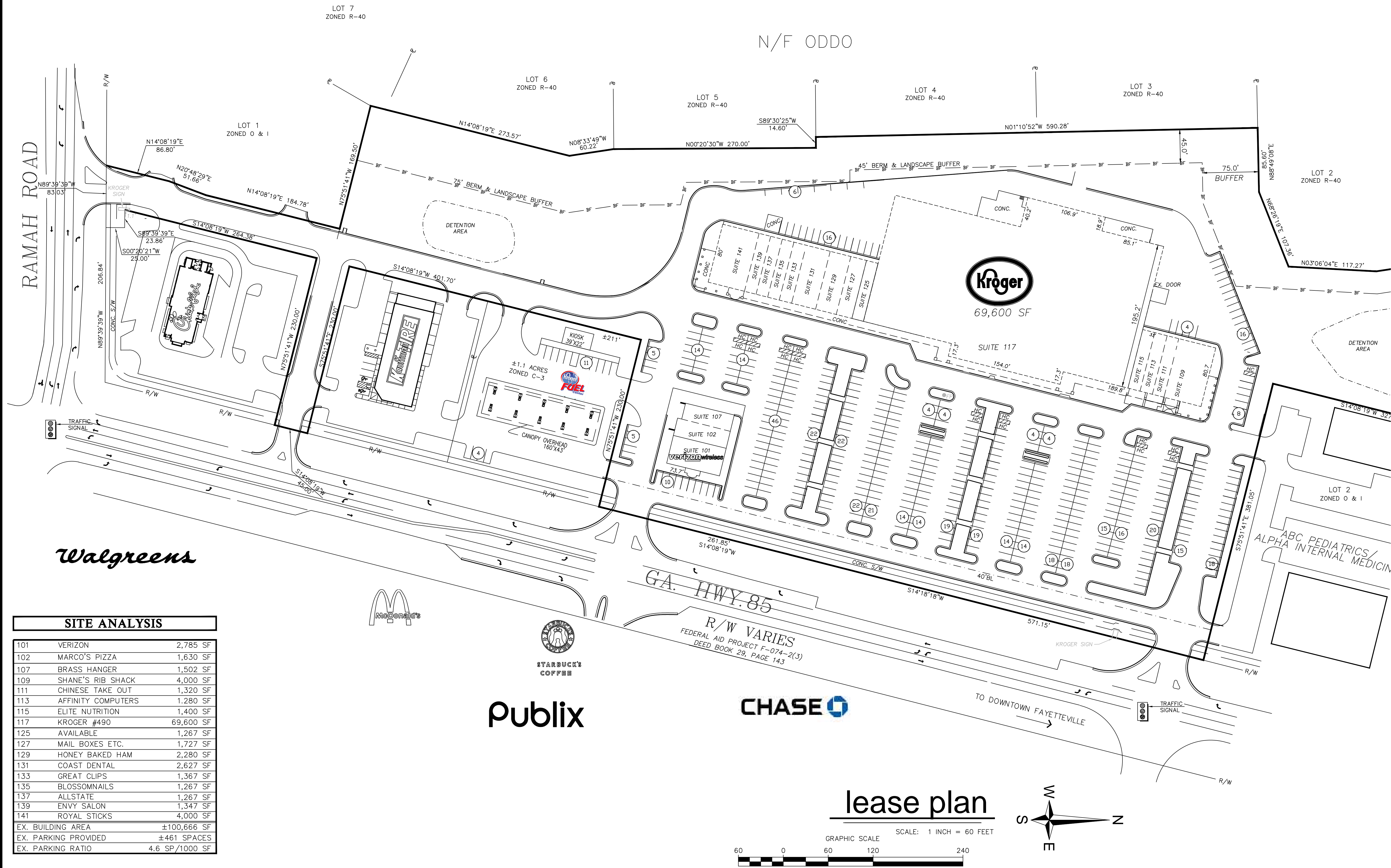


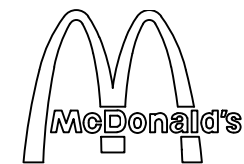
LEASE AREAS SHOWN SHOULD BE VERIFIED WITH ARCHITECTURE PLANS. AREAS AND PARKING HAVE BEEN BASED ON PLANS BY OTHERS. SITE INFORMATION SHOWN HAS BEEN BASED ON AN AS-BUILT SURVEY BY ROCHESTER AND ASSOCIATES DATED 8-16-2007.

HFR
HILL FOLEY ROSSI & ASSOCIATES, LLC
 ARCHITECTURE
 ENGINEERING
 SPACE PLANNING
 3680 Pleasant Hill Road
 Suite 200
 Duluth, Georgia 30096
 Phone: 770.622.9858
 Fax: 770.622.9535
 www.hillfoleyrossi.com

© Copyright (as dated below). This drawing and all reproductions thereof are the property of Hill Foley Rossi & Associates, LLC (HFR). It is intended for the sole use of the project named herein. Reproduction without the written consent of HFR is unlawful. All copies are to be returned to HFR upon project completion.



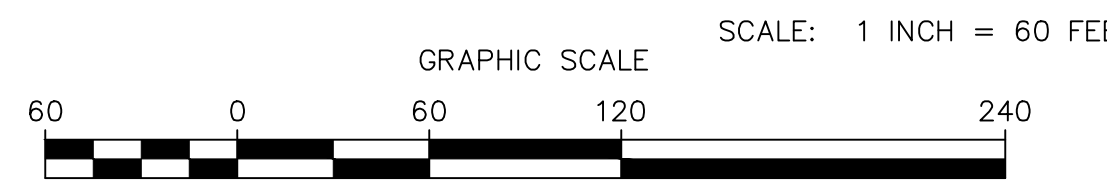
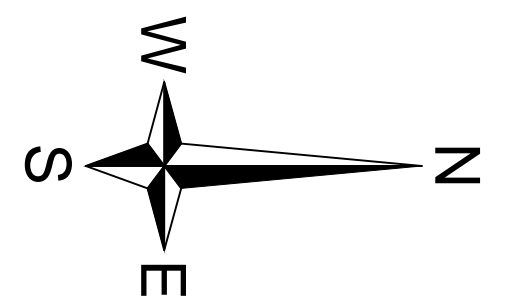
Walgreens



Publix



lease plan



SITE ANALYSIS		
101	VERIZON	2,785 SF
102	MARCO'S PIZZA	1,630 SF
107	BRASS HANGER	1,502 SF
109	SHANE'S RIB SHACK	4,000 SF
111	CHINESE TAKE OUT	1,320 SF
113	AFFINITY COMPUTERS	1,280 SF
115	ELITE NUTRITION	1,400 SF
117	KROGER #490	69,600 SF
125	AVAILABLE	1,267 SF
127	MAIL BOXES ETC.	1,727 SF
129	HONEY BAKED HAM	2,280 SF
131	COAST DENTAL	2,627 SF
133	GREAT CLIPS	1,367 SF
135	BLOSSOMNAILS	1,267 SF
137	ALLSTATE	1,267 SF
139	ENVY SALON	1,347 SF
141	ROYAL STICKS	4,000 SF
EX. BUILDING AREA		±100,666 SF
EX. PARKING PROVIDED		±461 SPACES
EX. PARKING RATIO		4.6 SP/1000 SF

1 4.24.15 SUITE 113, and 137 UPDATE
 MKI DATE SUBMITTAL/REVISION

FAYETTEVILLE TOWNE CENTER
 805 GLYNN STREET SOUTH
 FAYETTEVILLE, GA 30214

FOR:
RETAIL PLANNING CORPORATION
 35 JOHNSON FERRY ROAD
 MARIETTA, GA 30068
 770-956-8383
 678-385-1930 FAX

lease plan

CP.28

HFR #07-212

I:\Call_CDR\07-212_Kroger_Fayetteville_Expansion_BPC\10_Drawings\07212.rvt, Aug. 02/2015 2:20:29 PM, cadman