

# FOR SALE

## 0.75 Acre Commercial Site

NW Corner of N. Main Street & Irwin Bridge Road • Conyers, GA 30012

### Description:

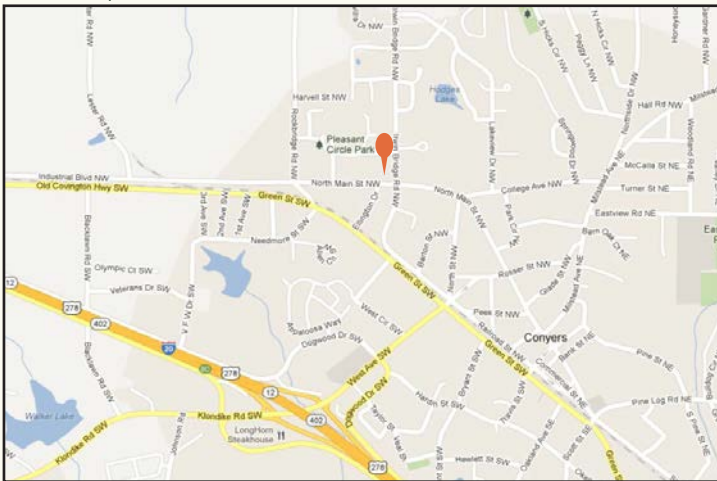
Located at the NW corner of North Main Street and Irwin Bridge Street, 16th District, Land Lot 274, Rockdale County, Georgia

City of Conyers Zoned for BG -- General Business



Aerial

### Location Map



### Land Size:

0.75 acres (32,670 sq. ft.)

### Zoning:

BG, General Business

Demographics:	1 Mile	3 Mile	5 Mile
Population:	4,078	30,485	66,799
Households:	1,539	10,872	24,263
Average HH Income:	\$46,903	\$52,837	\$58,745

Source: 2012 SitesUSA

### Traffic Counts:

Irwin Bridge Road:	4,060 AADT
Green Street:	6,600 AADT

Source: 2012 Georgia DOT

### For Information Contact:

**Fraser Gough**  
770.956.8383  
frasergough@retailplanningcorp.com

# ROCKDALE COUNTY

## RETAIL PLANNING CORPORATION

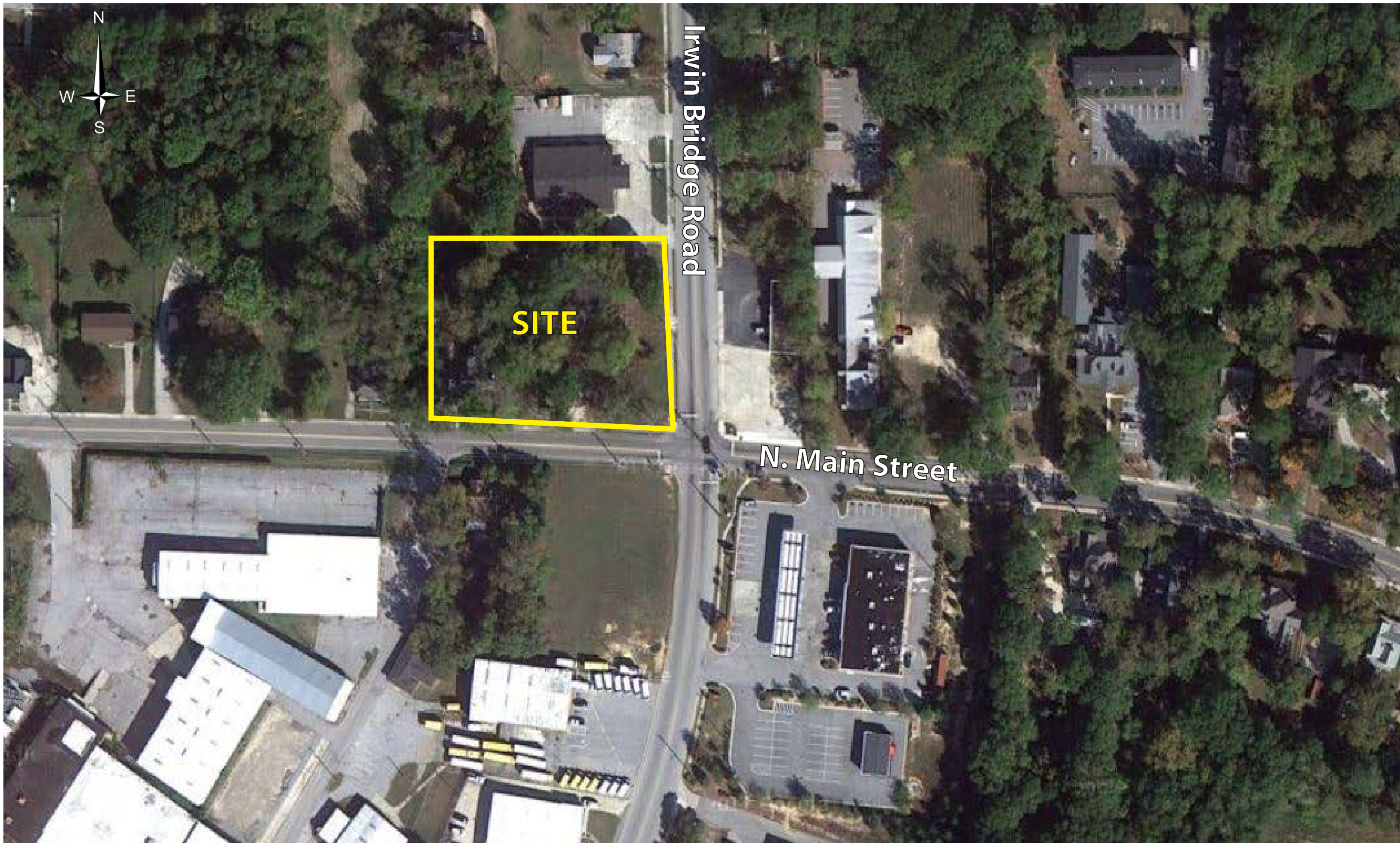
35 Johnson Ferry Road • Marietta, Georgia 30068 • 770-956-8383

Information contained herein has been obtained from the owners or from other sources deemed reliable. We have no reason to doubt its accuracy but we regret we cannot guarantee it.

**FOR SALE**

NW Corner of Main Street & Irwin Bridge Road • Conyers, GA 30012

**RETAIL PLANNING CORPORATION**



**SITE**

Irwin Bridge Road

N. Main Street

**FOR SALE**

NW Corner of Main Street & Irwin Bridge Road • Conyers, GA 30012

**RETAIL PLANNING CORPORATION**

