

# SIGMAN ROAD - 1.80 ACRES

SW CORNER SIGMAN ROAD & OLD COVINGTON HWY | CONYERS, GA 30012

ROCKDALE COUNTY



### 1.80 ACRE COMMERCIAL SITE:

- 78,408 SQ. FT.
- ZONED FOR C-2 - GENERAL COMMERCIAL DISTRICT
- 16TH DISTRICT, LL 213

### INTERSECTION:

SW CORNER OF SIGMAN ROAD /  
COVINGTON HWY & I-20

### TRAFFIC COUNTS:

- I-20: 79,0700 AADT
- SIGMAN ROAD: 14,160 AADT



DEMOGRAPHICS	1 MILE	3 MILE	5 MILE
2017 POPULATION	2,381	26,274	75,025
2017 HOUSEHOLDS	917	9,863	28,167
2017 AVG. HOUSEHOLD INCOME	\$61,545	\$57,730	\$56,172

**RETAIL PLANNING CORPORATION**

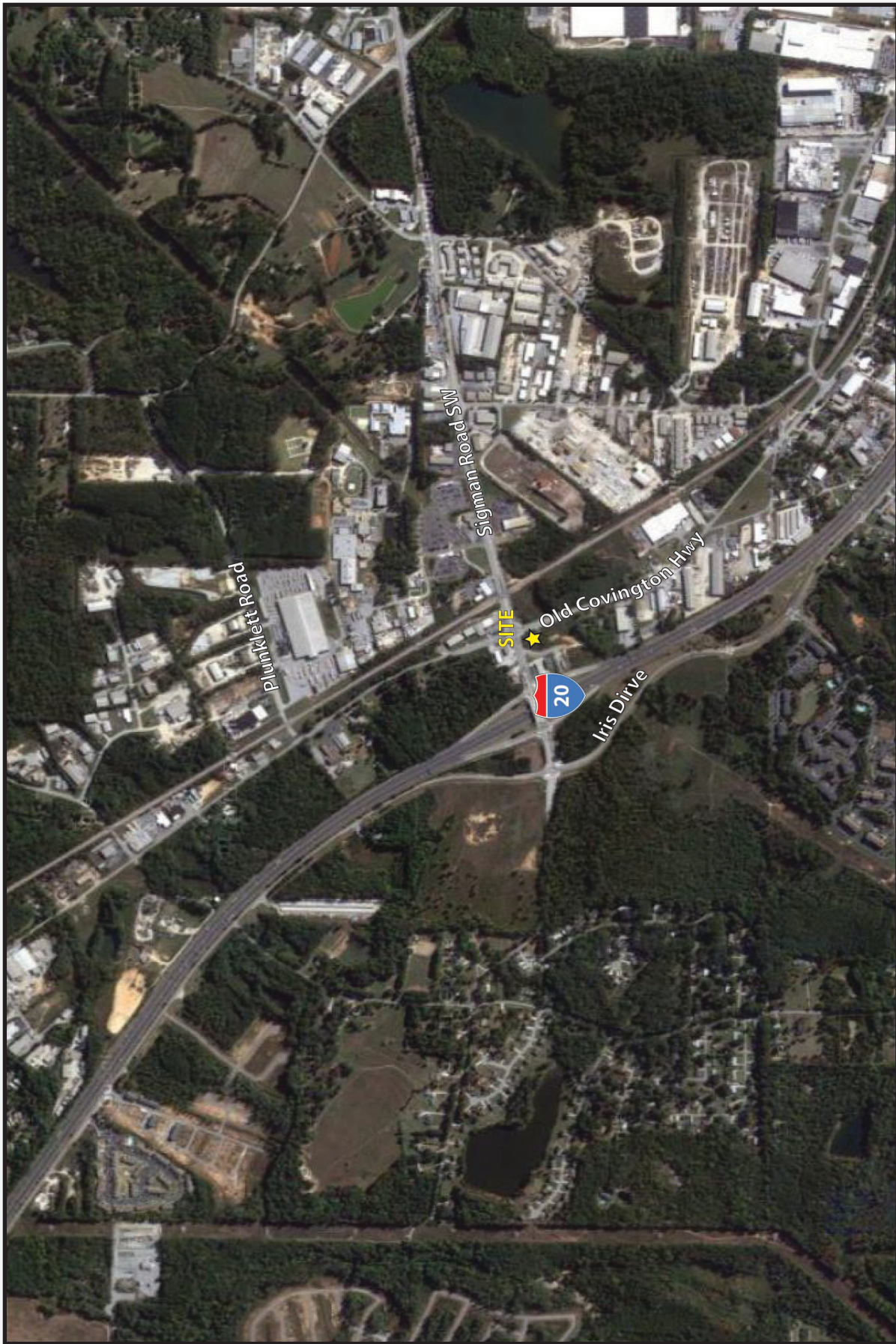
35 Johnson Ferry Road • Marietta, Georgia 30068 • 770-956-8383

PLEASE CONTACT US FOR MORE INFORMATION  
770.956.8383

LEASING@RETAILPLANNINGCORP.COM

Information contained herein has been obtained from the owners or from other sources deemed reliable. We have no reason to doubt its accuracy but we regret we cannot guarantee it.





# ROCKDALE COUNTY

## RETAIL PLANNING CORPORATION

35 Johnson Ferry Road • Marietta, Georgia 30068 • 770-956-8383

PLEASE CONTACT US FOR MORE INFORMATION  
770.956.8383

[LEASING@RETAILPLANNINGCORP.COM](mailto:LEASING@RETAILPLANNINGCORP.COM)

Information contained herein has been obtained from the owners or from other sources deemed reliable. We have no reason to doubt its accuracy but we regret we cannot guarantee it.