

Senoia Outparcels

Senoia, Georgia

[Hwy 85 and GA-16 Senoia, GA 30276](#)

- Site is located in the heart of a Publix-anchored retail corridor
- Nearby Publix receives 827k annual visits (Top 22% among grocery stores in Georgia)
- High income demographics
- Excellent visibility
- Convenient ingress/egress points



AREA TENANTS

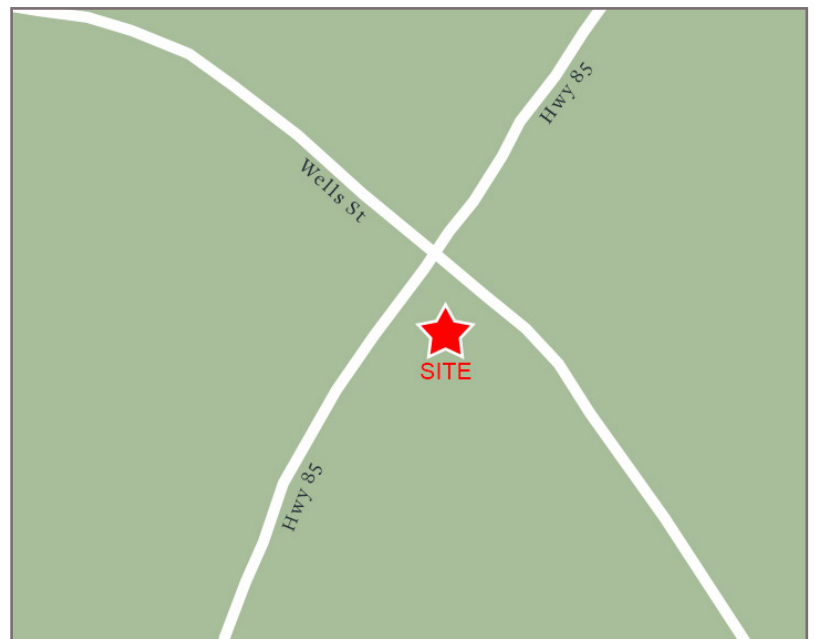
Publix, Great Clips, Dunkin' Donuts, Chick-fil-A and McDonalds.

TRAFFIC COUNTS

Wells St	14,750	AADT
Hwy 85	14,617	AADT

DEMOGRAPHICS

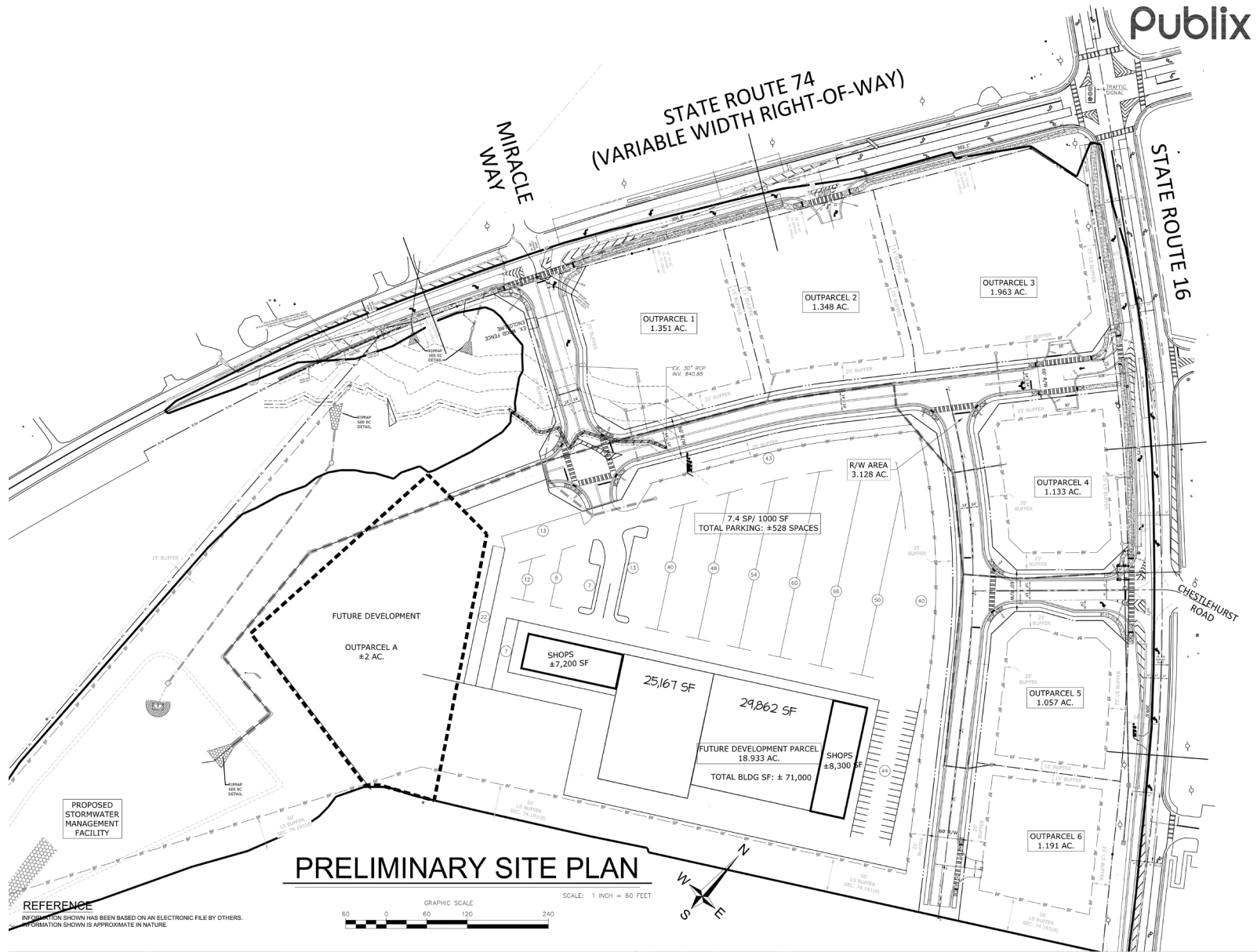
	1 Mi Radius	3 Mi Radius	5 Mi Radius
Population	1,039	9,865	24,952
Households	383	3,464	8,725
Avg HH Income	\$128,198	\$144,339	\$153,064
Daytime Pop	477	1,648	5,126



Senoia Outparcels

Senoia, Georgia

Hwy 85 and GA-16 Senoia, GA 30276



Senoia Outparcels

Senoia, Georgia

[Hwy 85 and GA-16 Senoia, GA 30276](#)



35 Johnson Ferry Road, Marietta, GA 30068
770.956.8383 | jacob.harb@retailplanningcorp.com
retailplanningcorp.com

RPC