

# Senoia Outparcels

## Senoia, Georgia

Hwy 85 and GA-16 Senoia, GA 30276

- Site is located in the heart of a Publix-anchored retail corridor
- Nearby Publix receives 827k annual visits (Top 22% among grocery stores in Georgia)
- High income demographics
- Excellent visibility
- Convenient ingress/egress points



### AREA TENANTS

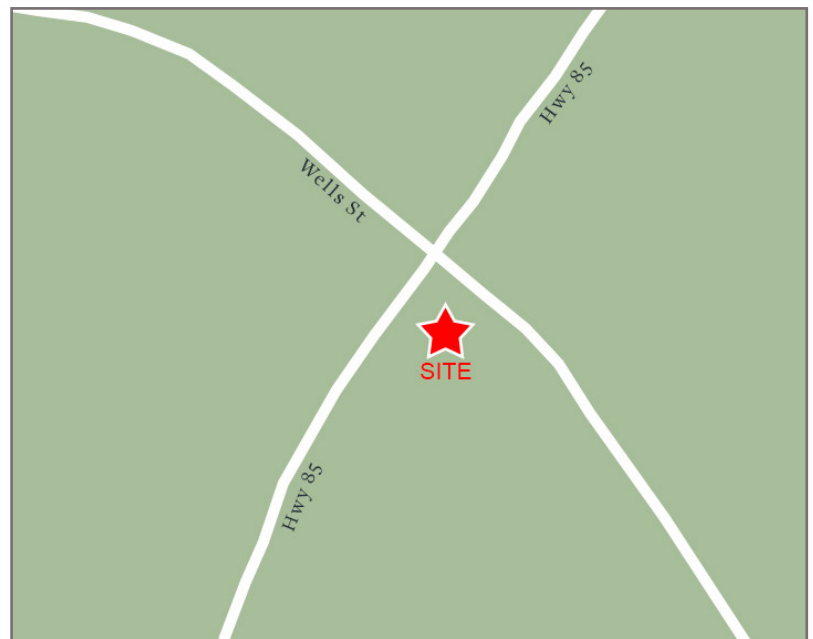
Publix, Great Clips, Dunkin' Donuts, Chick-fil-A and McDonalds.

### TRAFFIC COUNTS

|          |        |      |
|----------|--------|------|
| Wells St | 14,998 | AADT |
| Hwy 85   | 13,866 | AADT |

### DEMOGRAPHICS

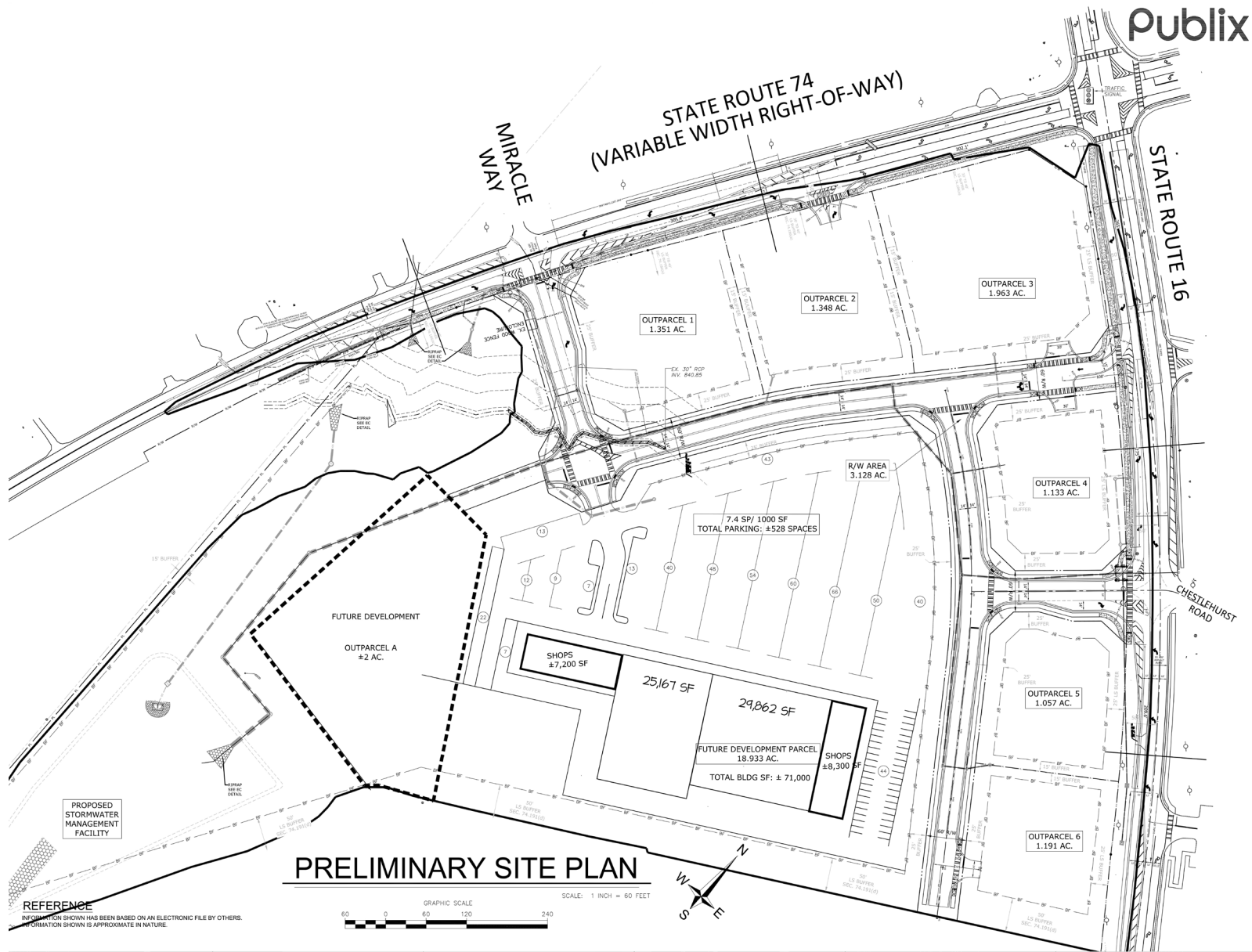
|               | 1 Mi Radius | 3 Mi Radius | 5 Mi Radius |
|---------------|-------------|-------------|-------------|
| Population    | 1,039       | 9,865       | 24,952      |
| Households    | 383         | 3,464       | 8,725       |
| Avg HH Income | \$128,198   | \$144,339   | \$153,064   |
| Daytime Pop   | 477         | 1,648       | 5,126       |



# Senoia Outparcels

## Senoia, Georgia

Hwy 85 and GA-16 Senoia, GA 30276





# Senoia Outparcels

Senoia, Georgia

[Hwy 85 and GA-16 Senoia, GA 30276](#)



35 Johnson Ferry Road, Marietta, GA 30068  
770.956.8383 | [jacob.harb@retailplanningcorp.com](mailto:jacob.harb@retailplanningcorp.com)  
[retailplanningcorp.com](http://retailplanningcorp.com)

RPC